

## New names : faster, easier, smarter

Since early 2001, Coelme and Egic have joined their efforts to provide their customers with the best equipment and service.

Becoming even more internationally oriented we are going to give progressively to our well known disconnectors new names, in order for integrators and final users to get intuitive and international names, and to improve our efficiency in communicating and working together.

These names include all the necessary information that you need to identify the product you need, for the function you aim :

- switch geometry
- existence of 1 or 2 integrated earth switches
- rated voltage  $U_r$  as per IEC 60694, referring by default to the highest insulation level (BIL) displayed in the standard table.
- rated permanent current  $I_r$  as per IEC 60694, for normal ambient temperatures (-25 / +40°C)

### **CBD 72.5 - 550 kV**

As a first milestone of our new naming policy, we are pleased to introduce our range of Centre Break Disconnectors, simply and logically called "CBD".

**The former ranges called "SDC" and "DR" have now merged into a unique and consistent line of products.**

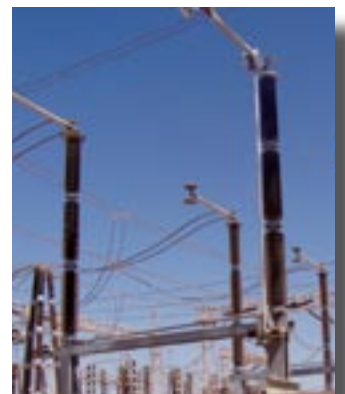


from :

**CBD 72.5 - 1250**  
(former SDC 325 - 1250)

to :

**CBD 550 - 4000**  
(former DR 550 - 4000)



Due to existing type test reports, we propose you the relevant table of correspondence in the Type Test Summary, to justify that your model has been fully tested in accordance with the standards.

The whole team of our company will be pleased to provide you with any additional information you may need.